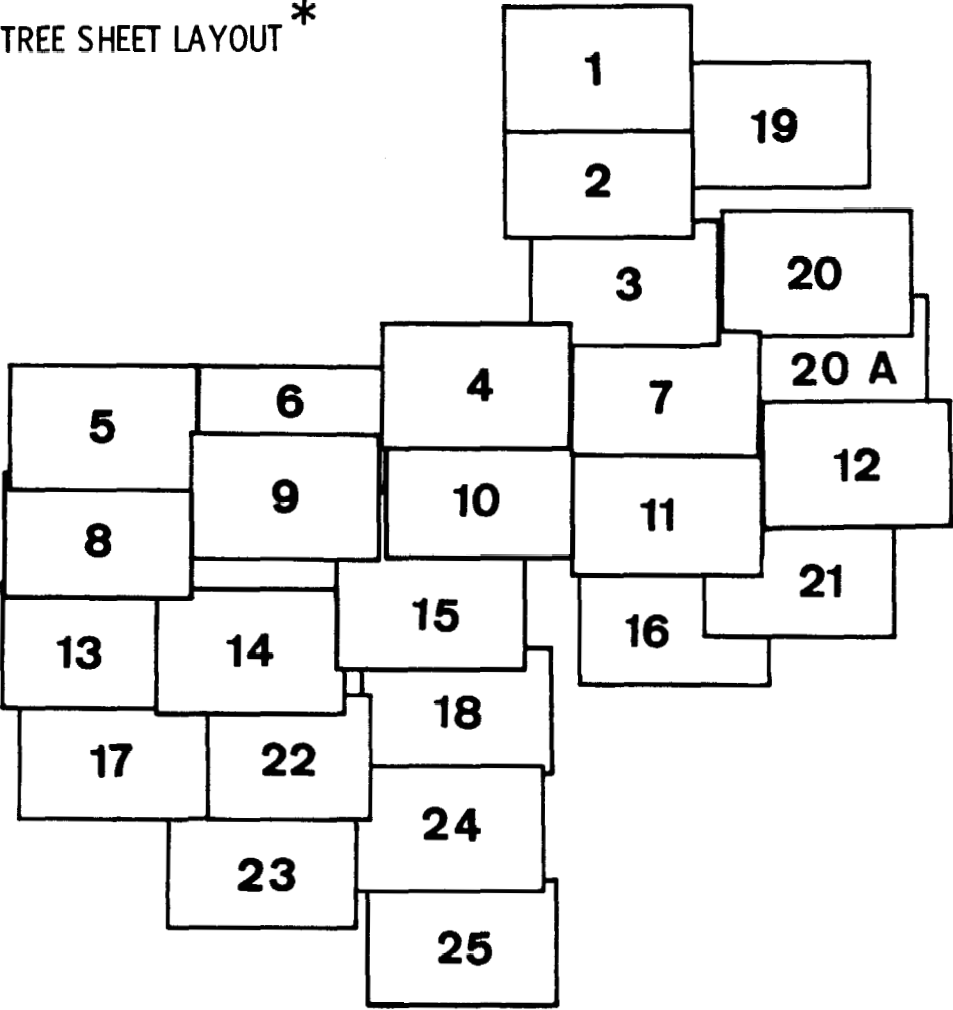


FAULT TREE SHEET LAYOUT *



F-115

* TO ASSEMBLE FAULT TREE, LAYOUT PAGES IN THE POSITIONS SHOWN ABOVE

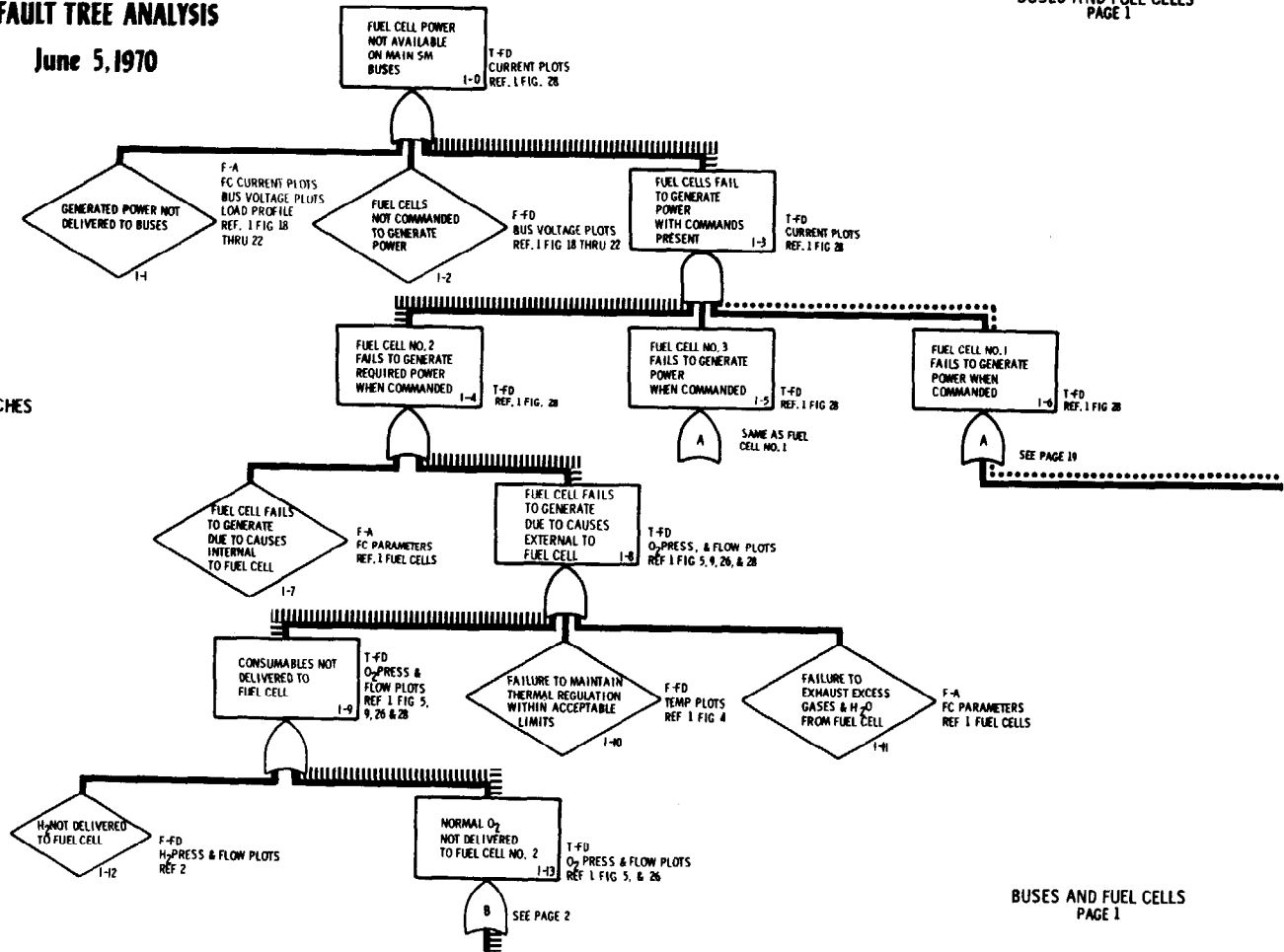
FAULT TREE ANALYSIS

June 5, 1970

BUSES AND FUEL CELLS
PAGE 1

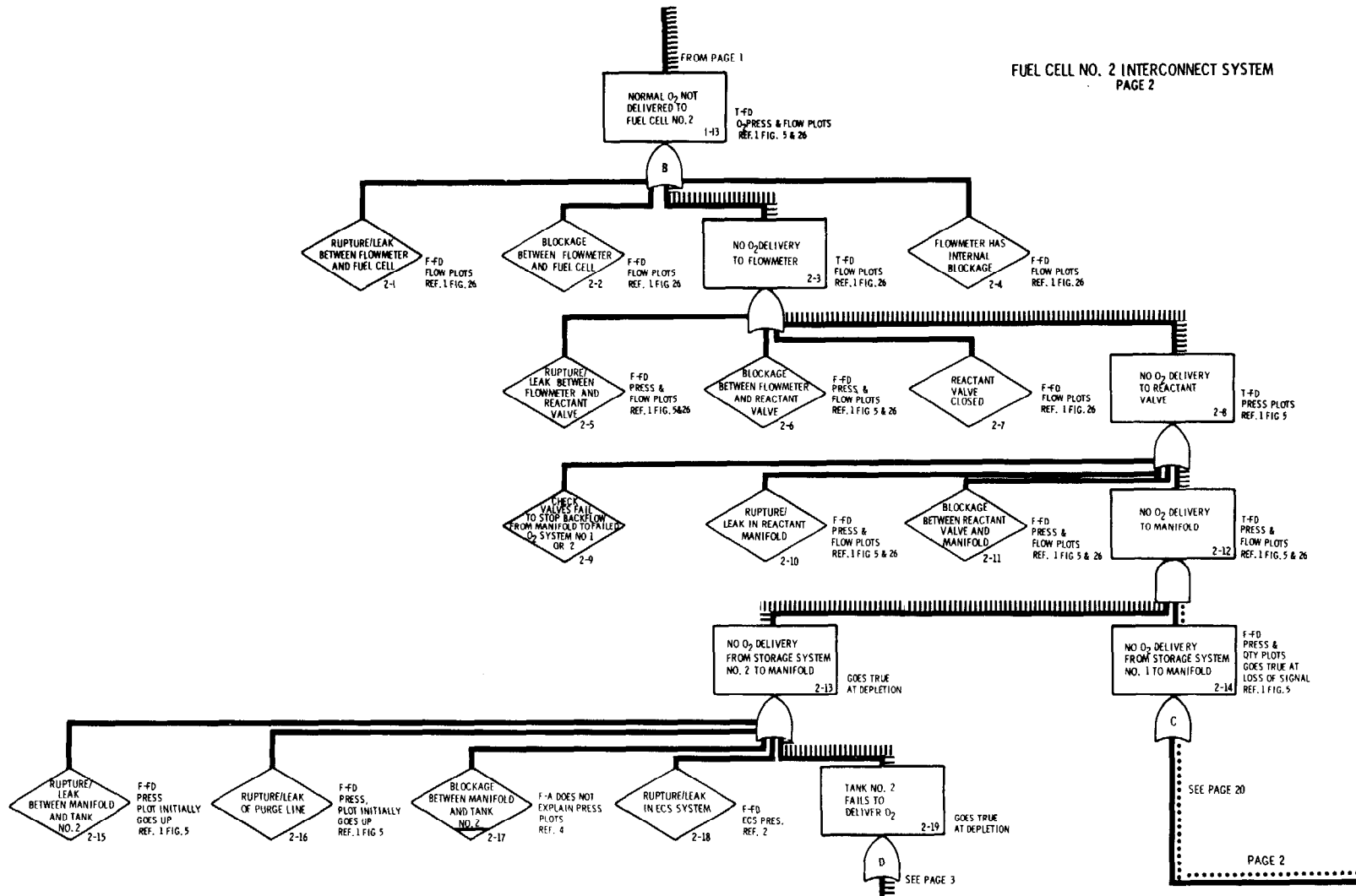
F-116

||||| MAIN THREAD
----- CONTRIBUTORY BRANCHES

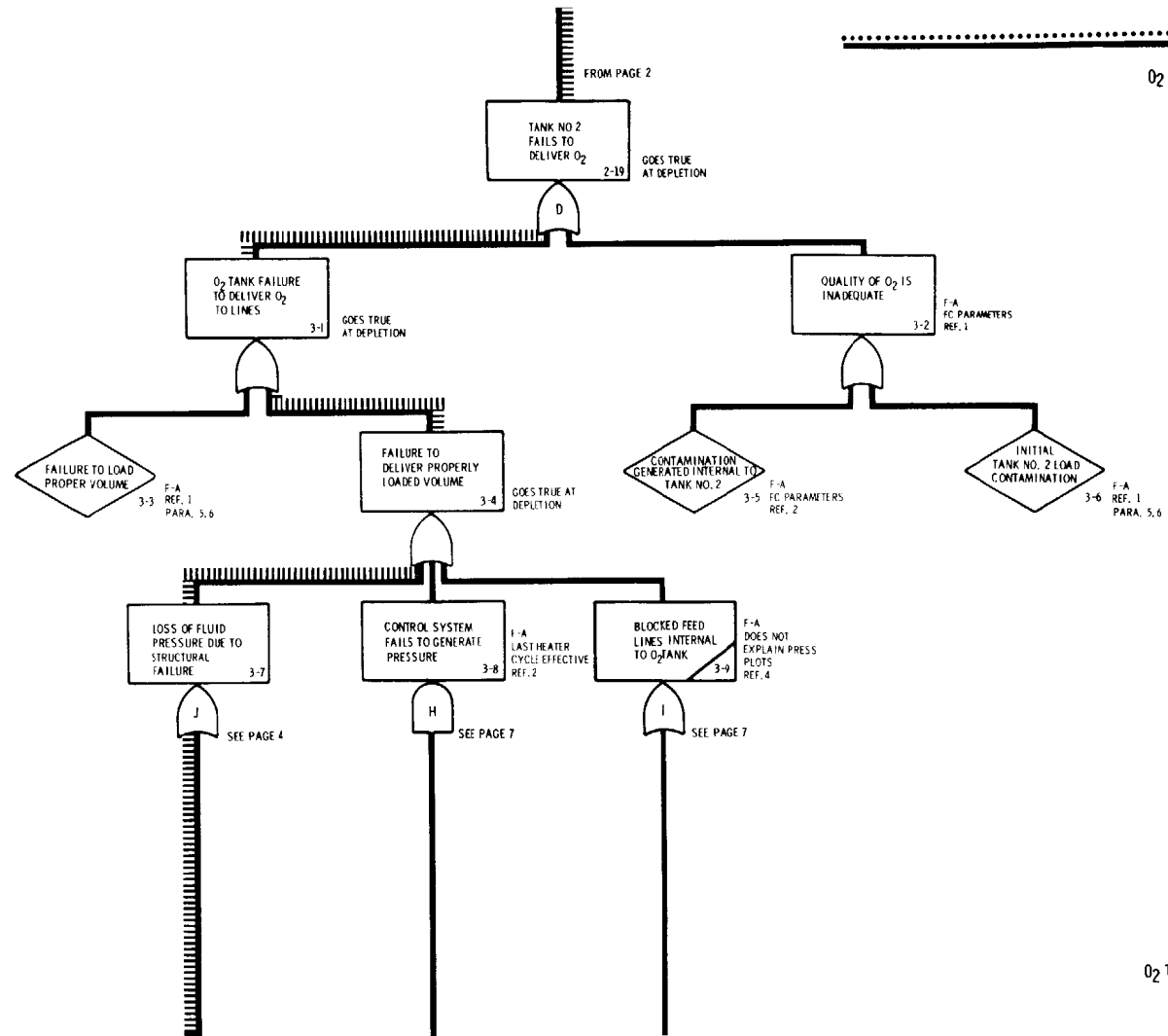


BUSES AND FUEL CELLS
PAGE 1

F-117

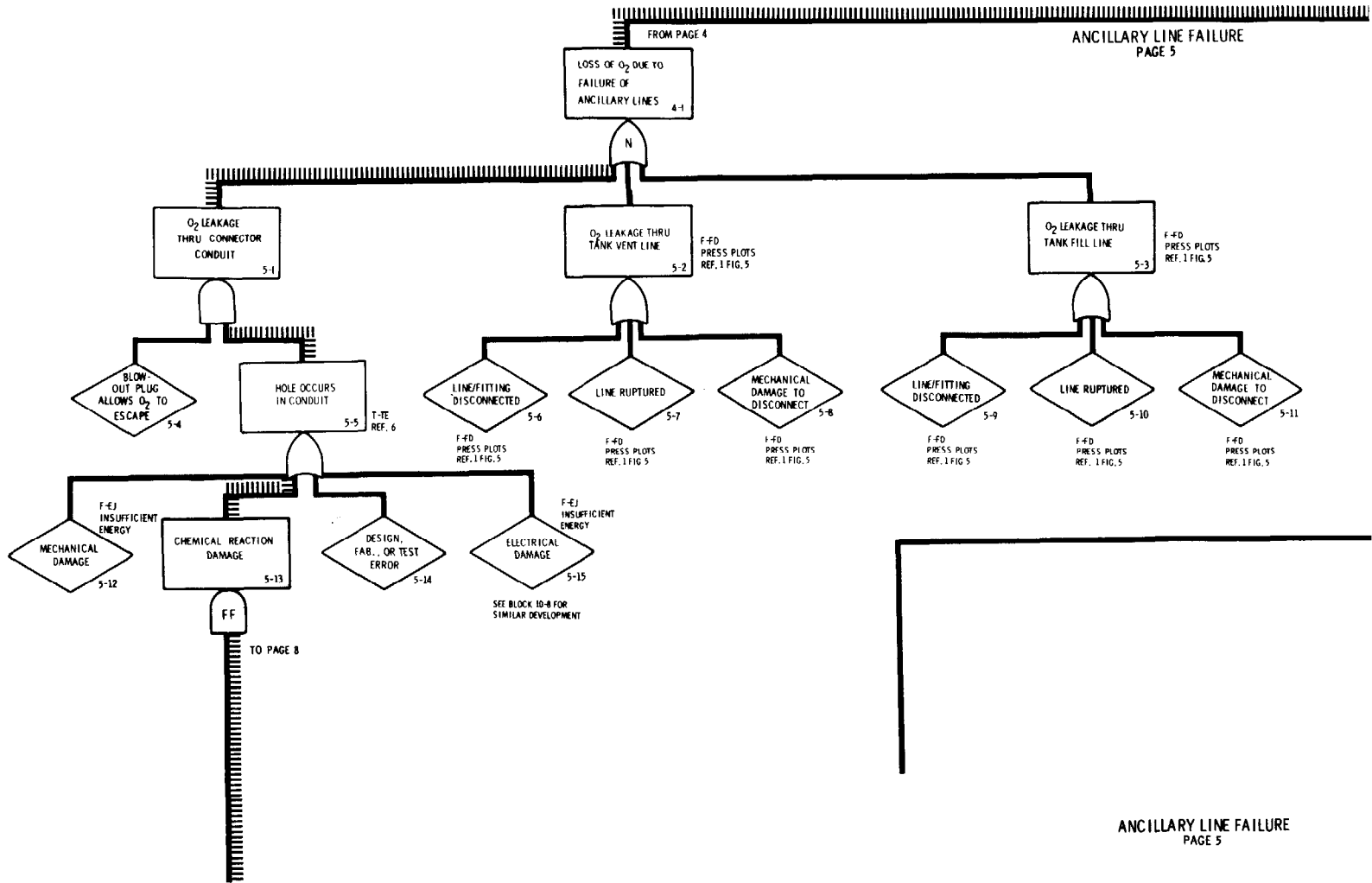


P-118



O₂ TANK NO. 2
PAGE 3

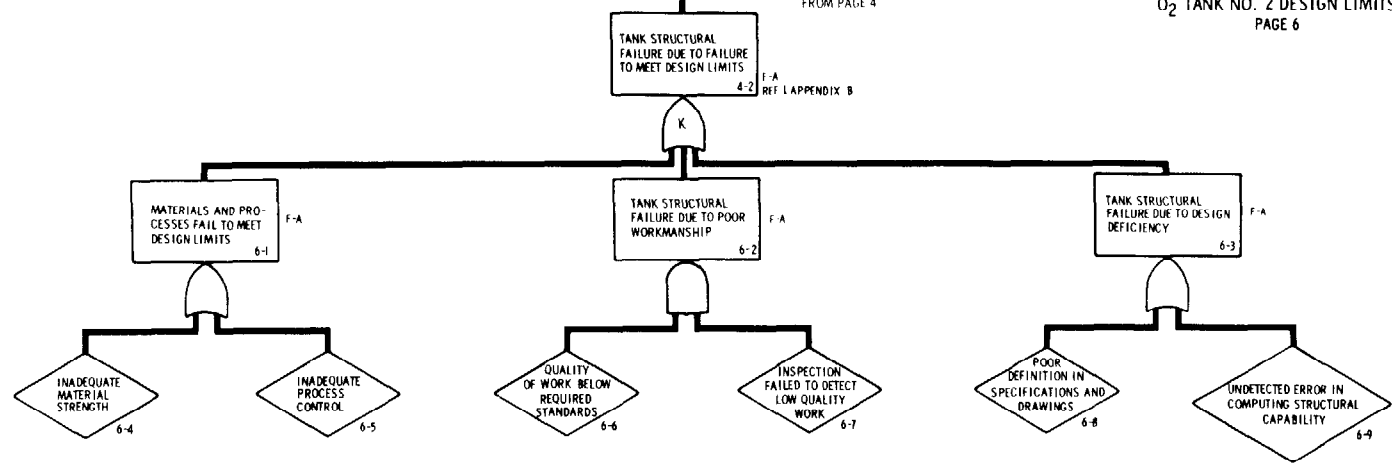
F-120





FROM PAGE 4

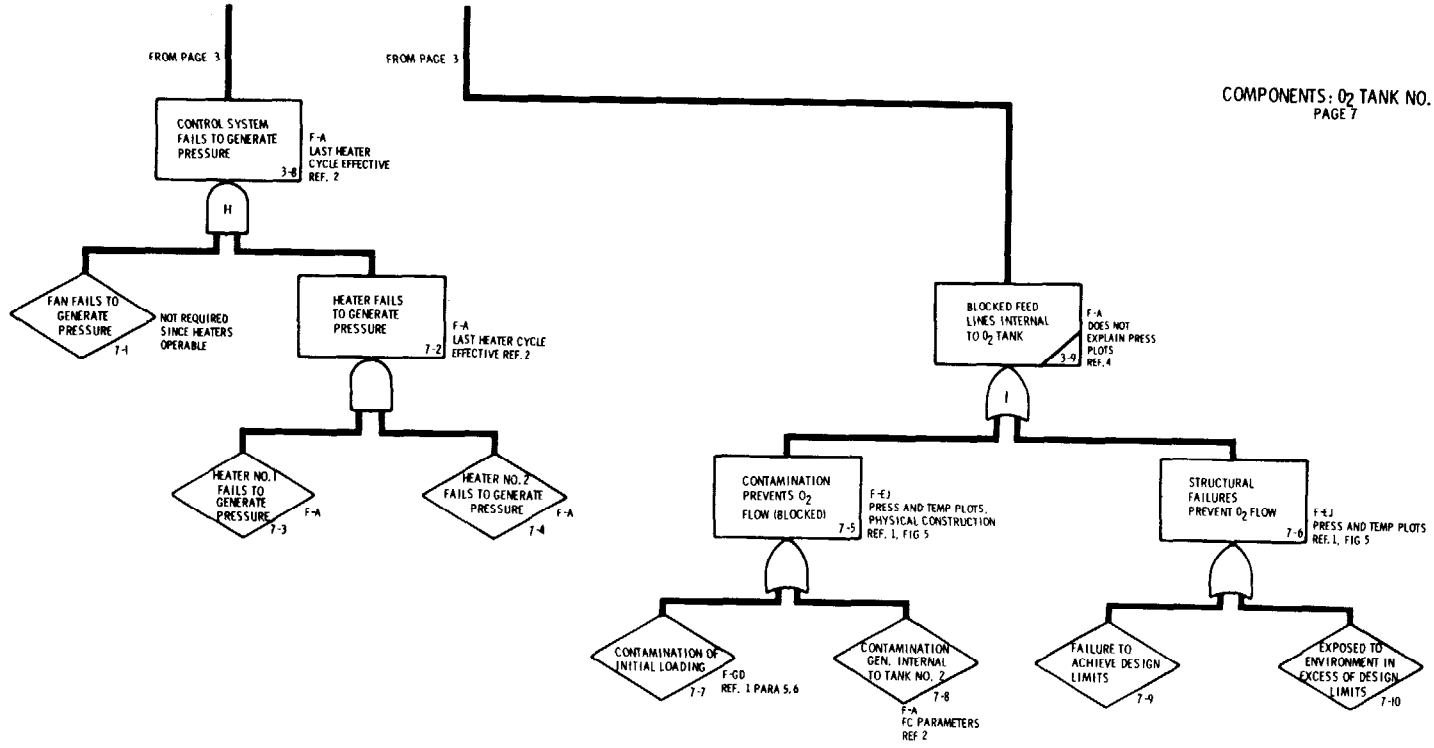
O₂ TANK NO. 2 DESIGN LIMITS
PAGE 6



F-121

O₂ TANK NO. 2 DESIGN LIMITS
PAGE 6

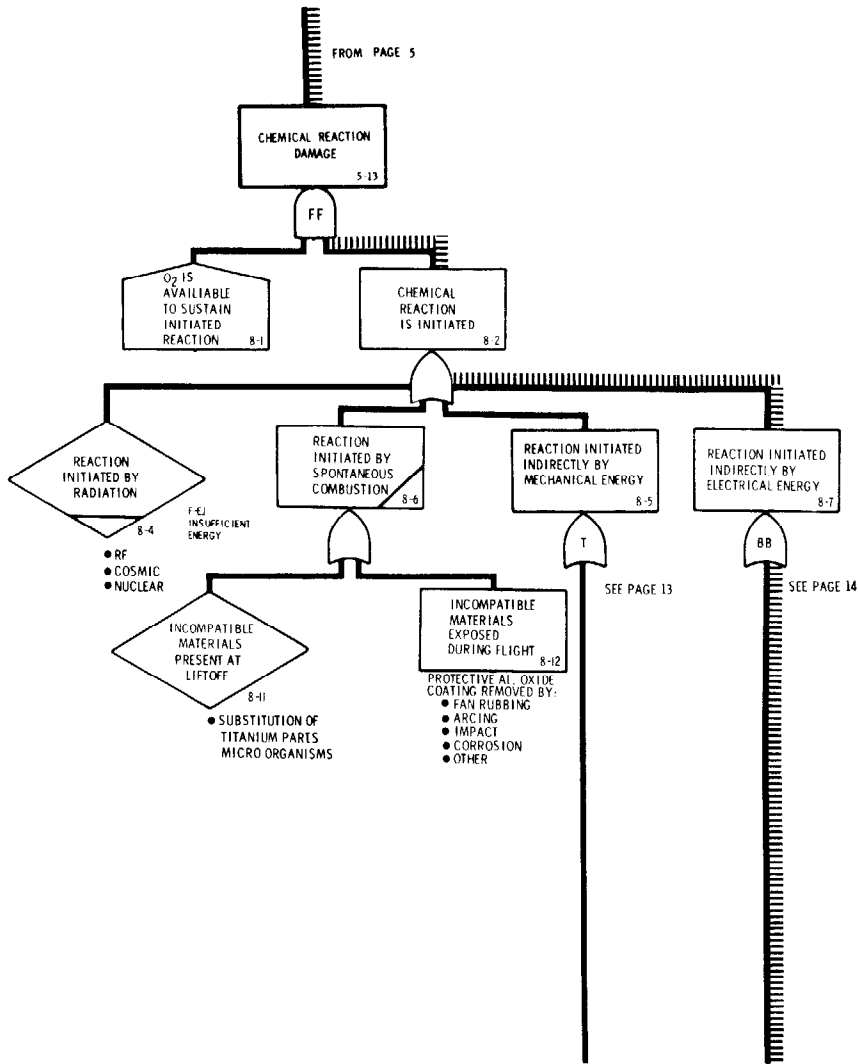
F-122



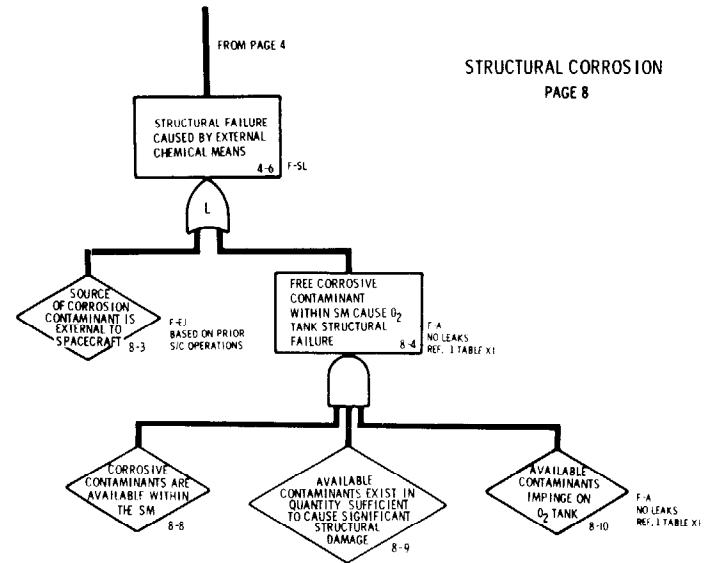
COMPONENTS: O₂ TANK NO. 2
PAGE 7

COMPONENTS: O₂ TANK NO. 2
PAGE 7

F-123

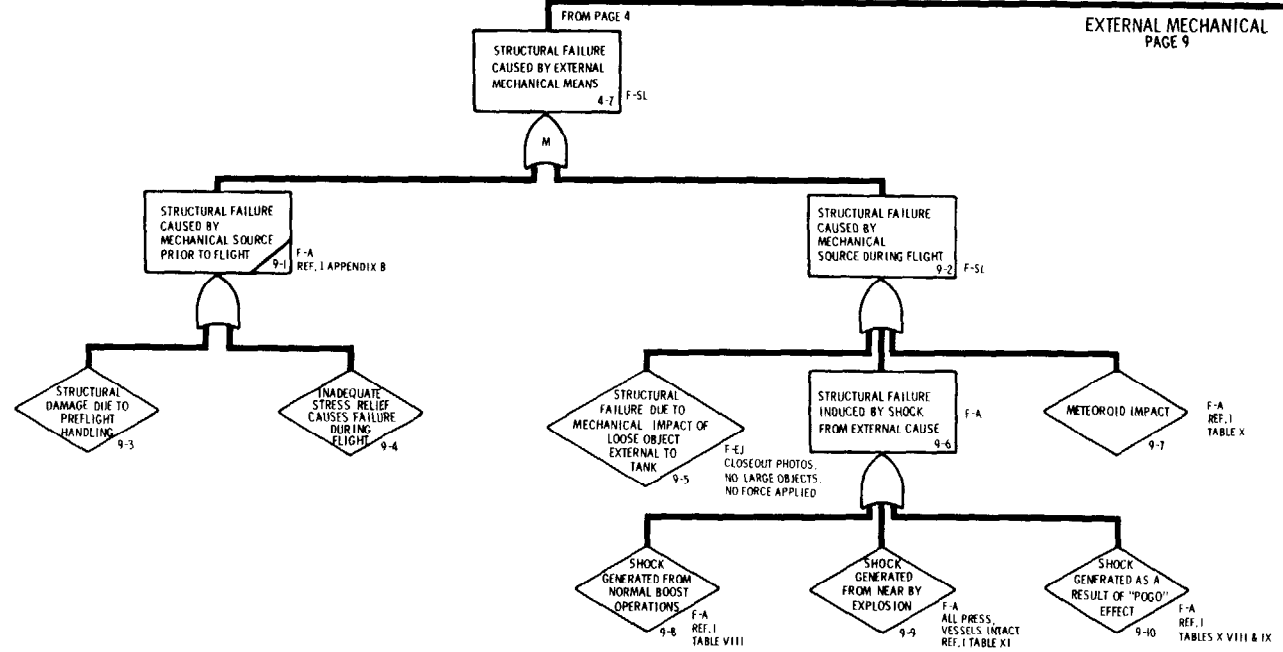


STRUCTURAL CORROSION
PAGE 8



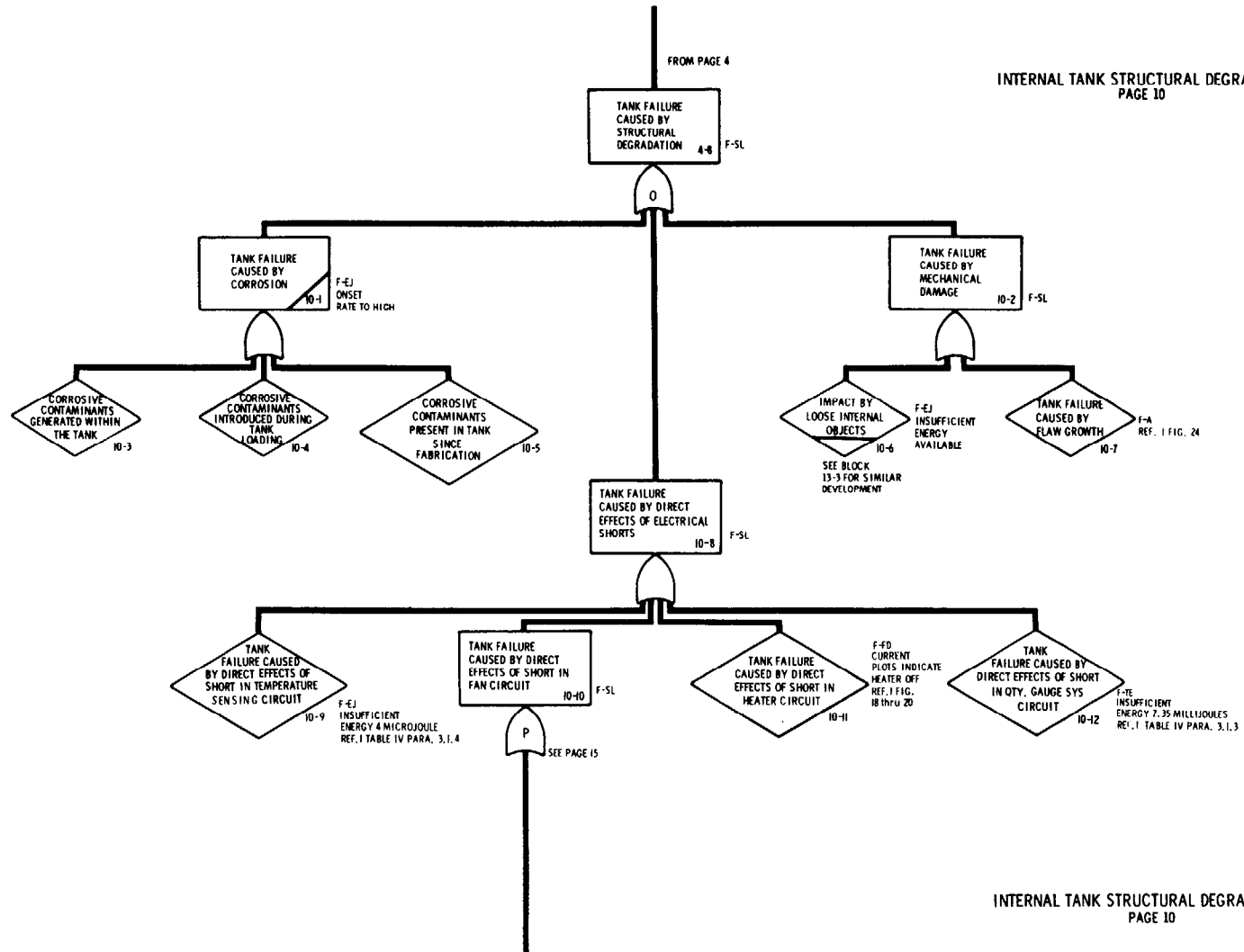
STRUCTURAL CORROSION
PAGE 8

F-124

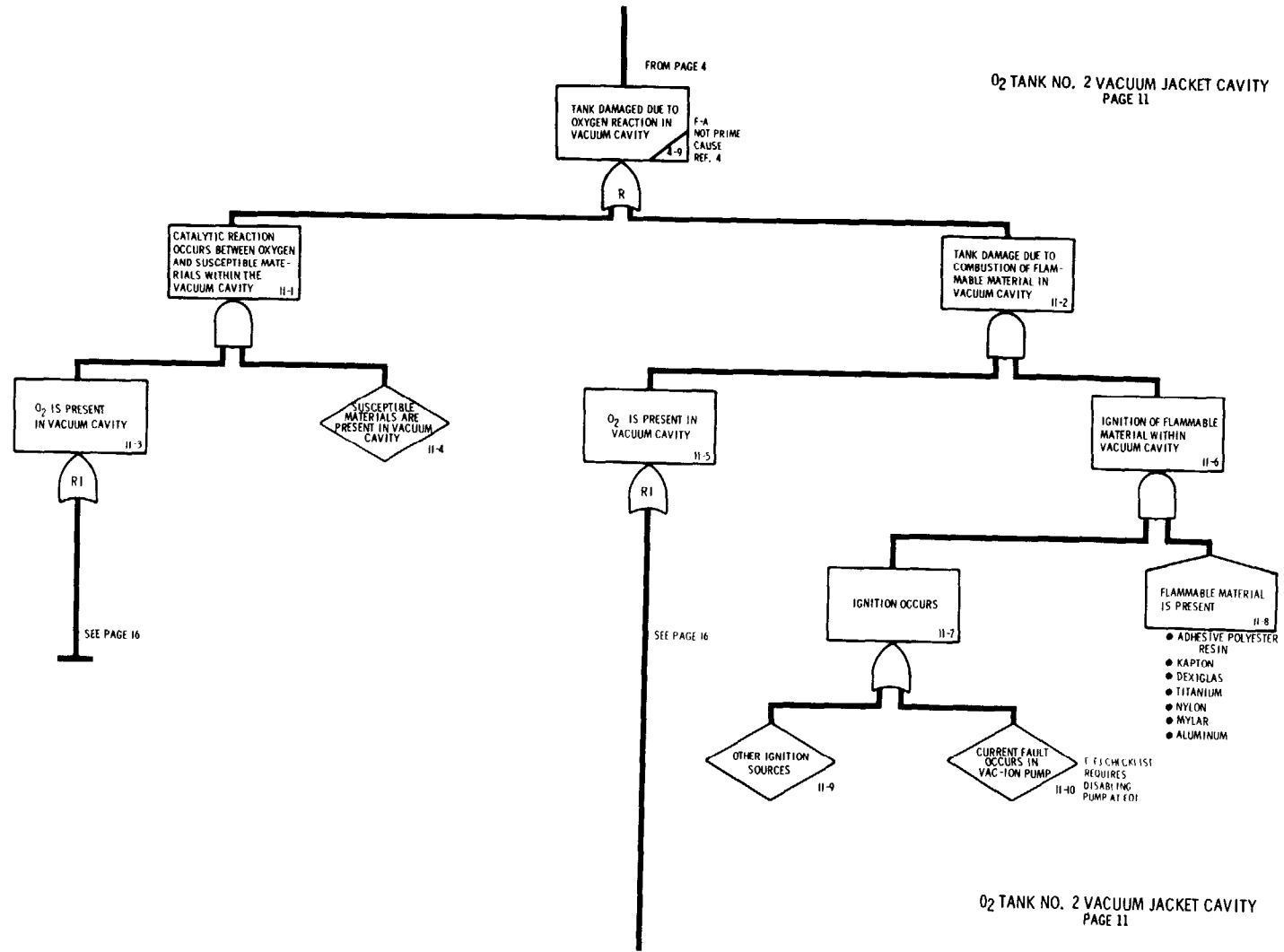


F-125

INTERNAL TANK STRUCTURAL DEGRADATION
PAGE 10



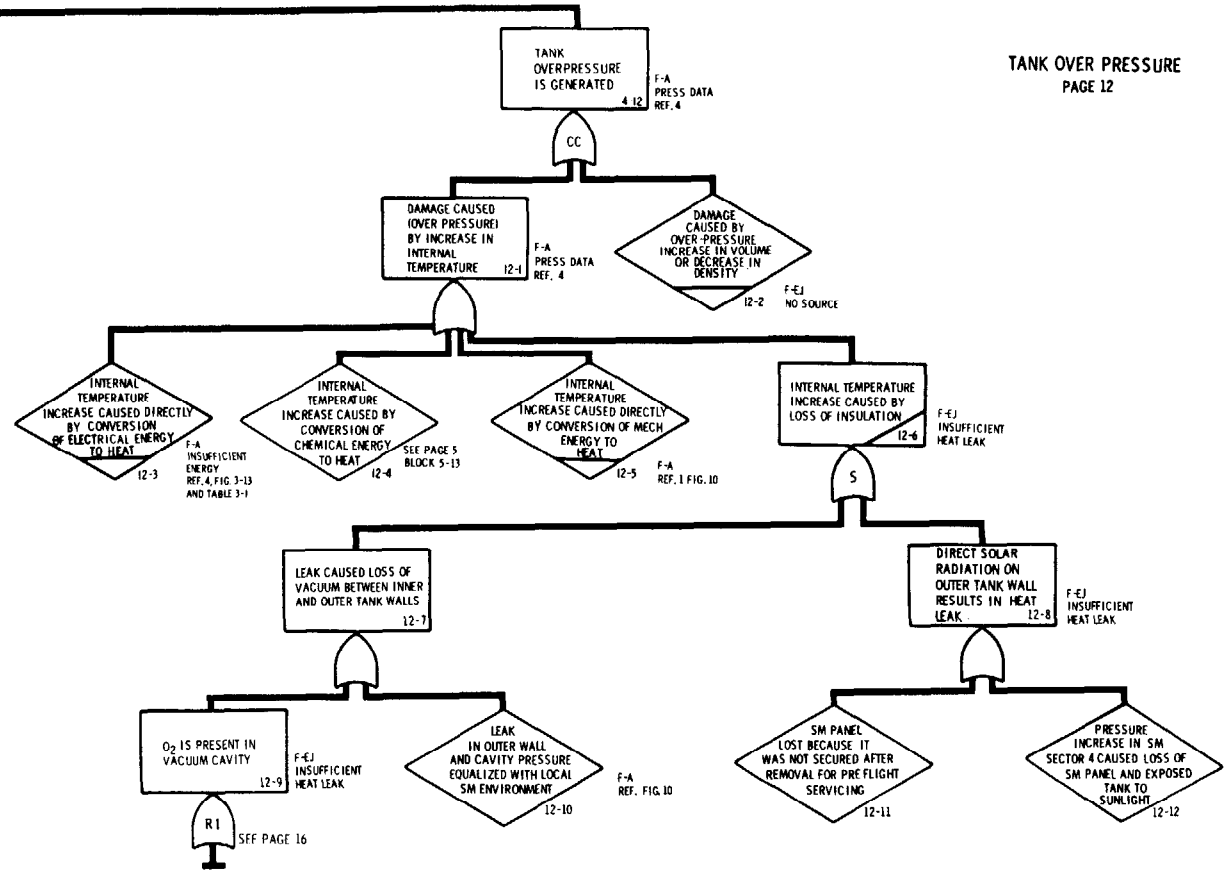
F-126



FROM PAGE 4

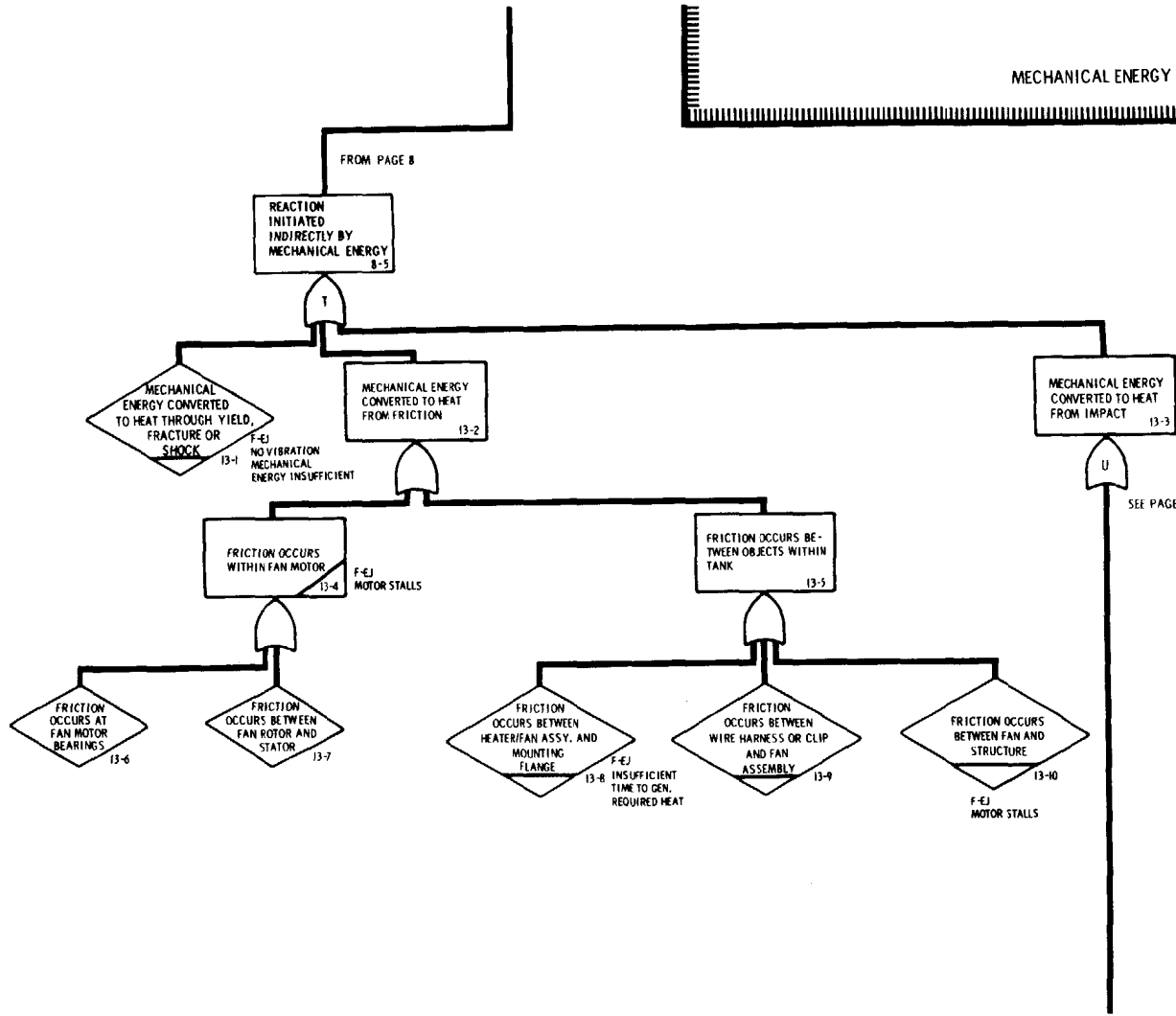
TANK OVER PRESSURE
PAGE 12

F-127

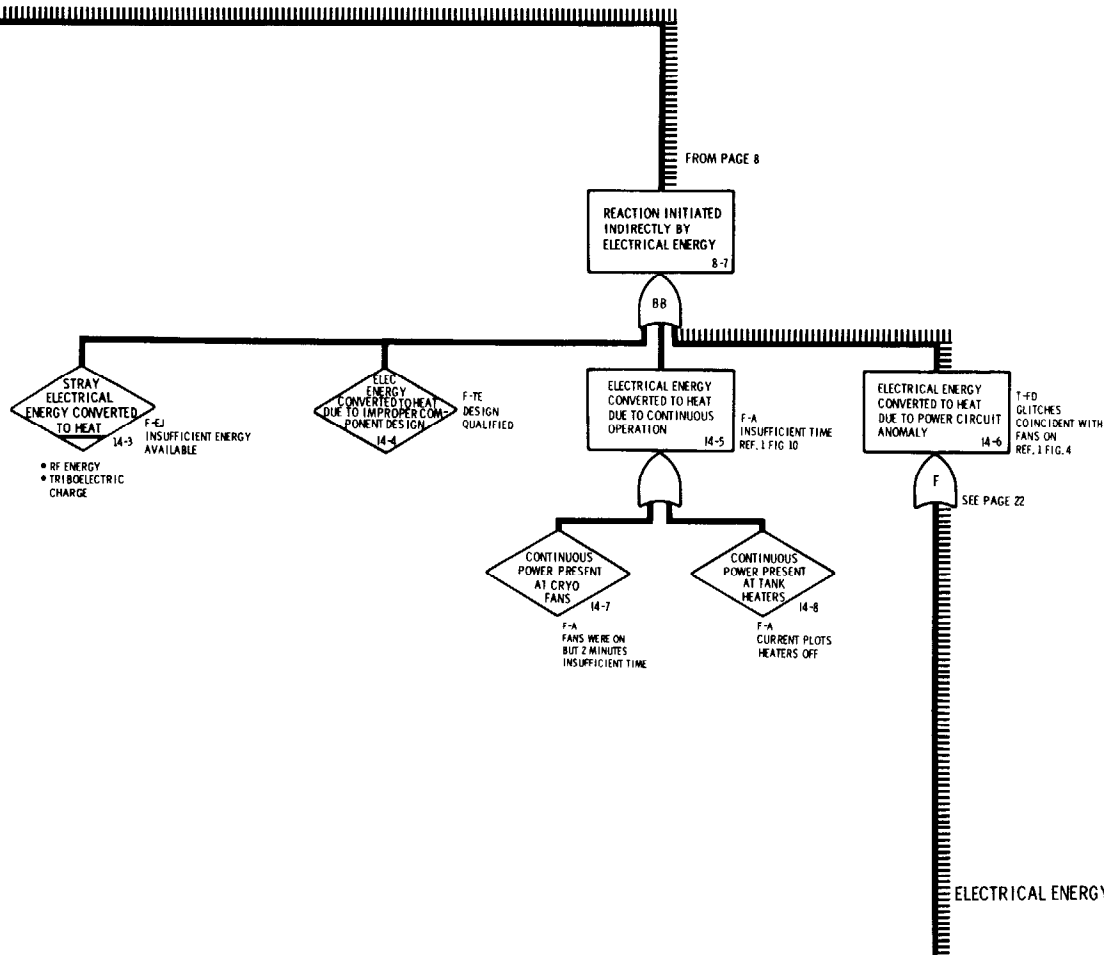


TANK OVER PRESSURE
PAGE 12

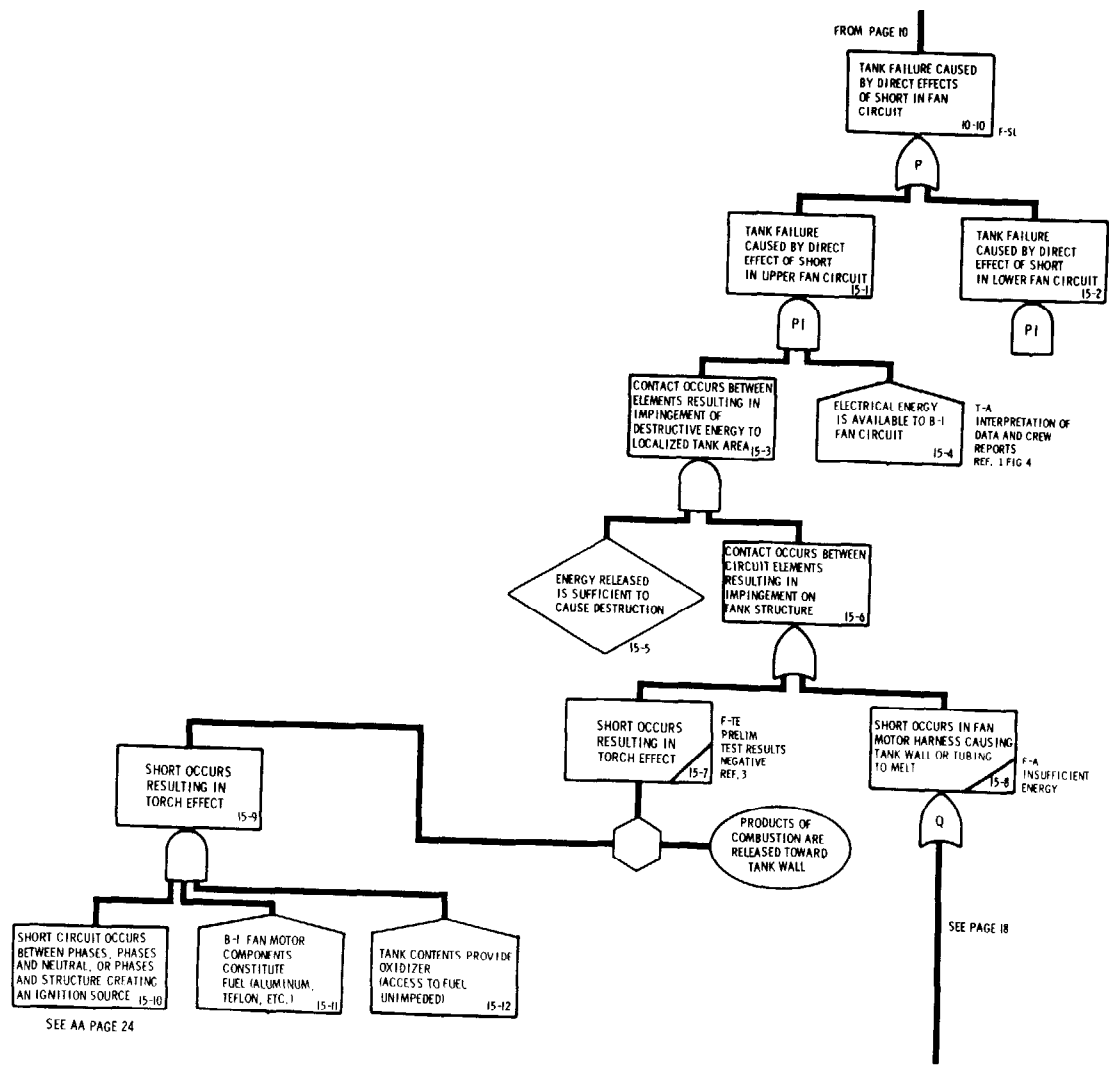
7-128



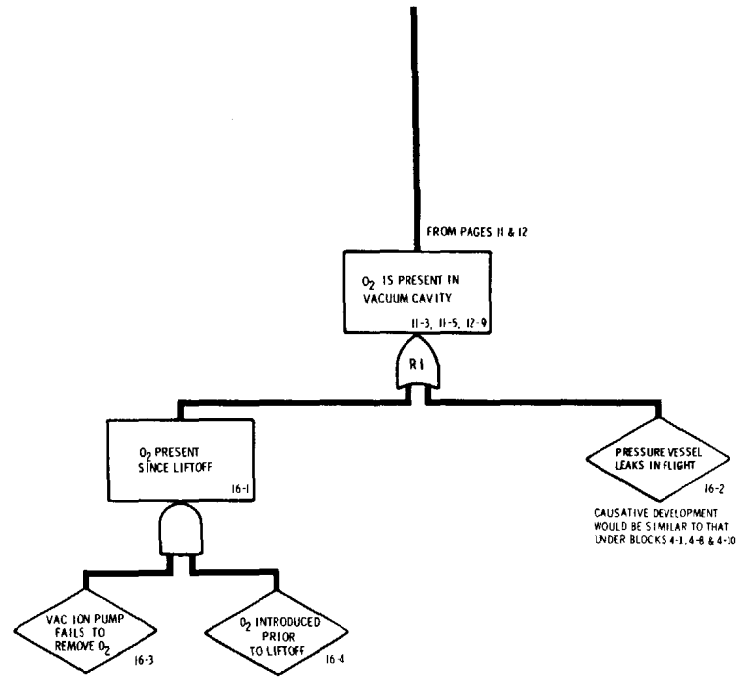
F-129



F-130



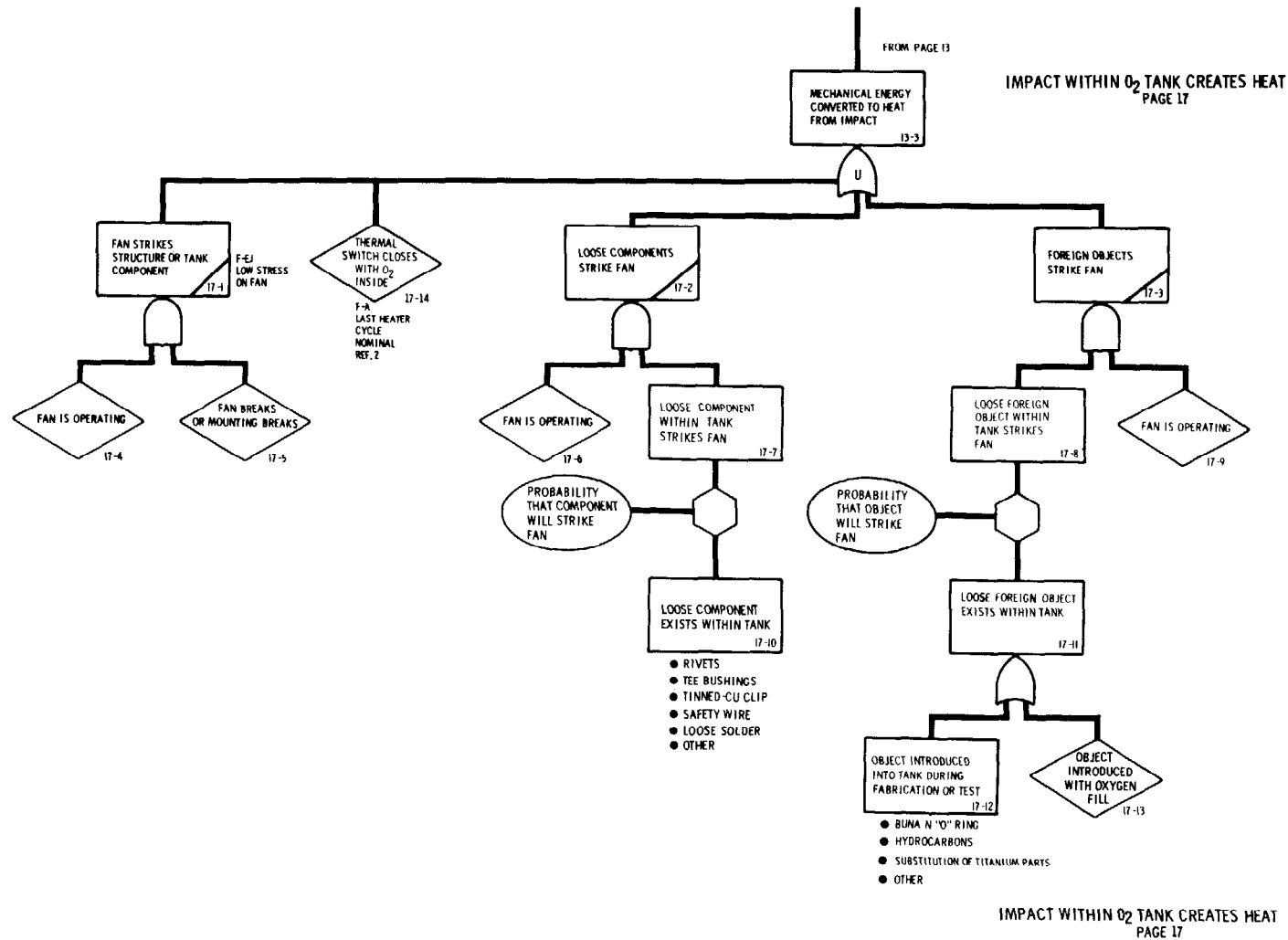
F-131



O₂ IN VACUUM CAVITY
PAGE 16

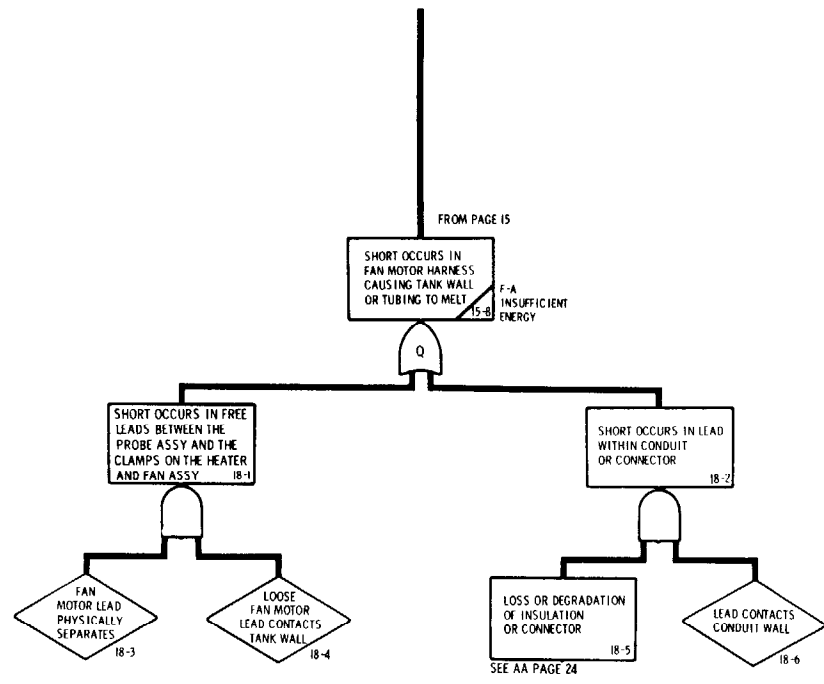
O₂ IN VACUUM CAVITY
PAGE 16

F-132



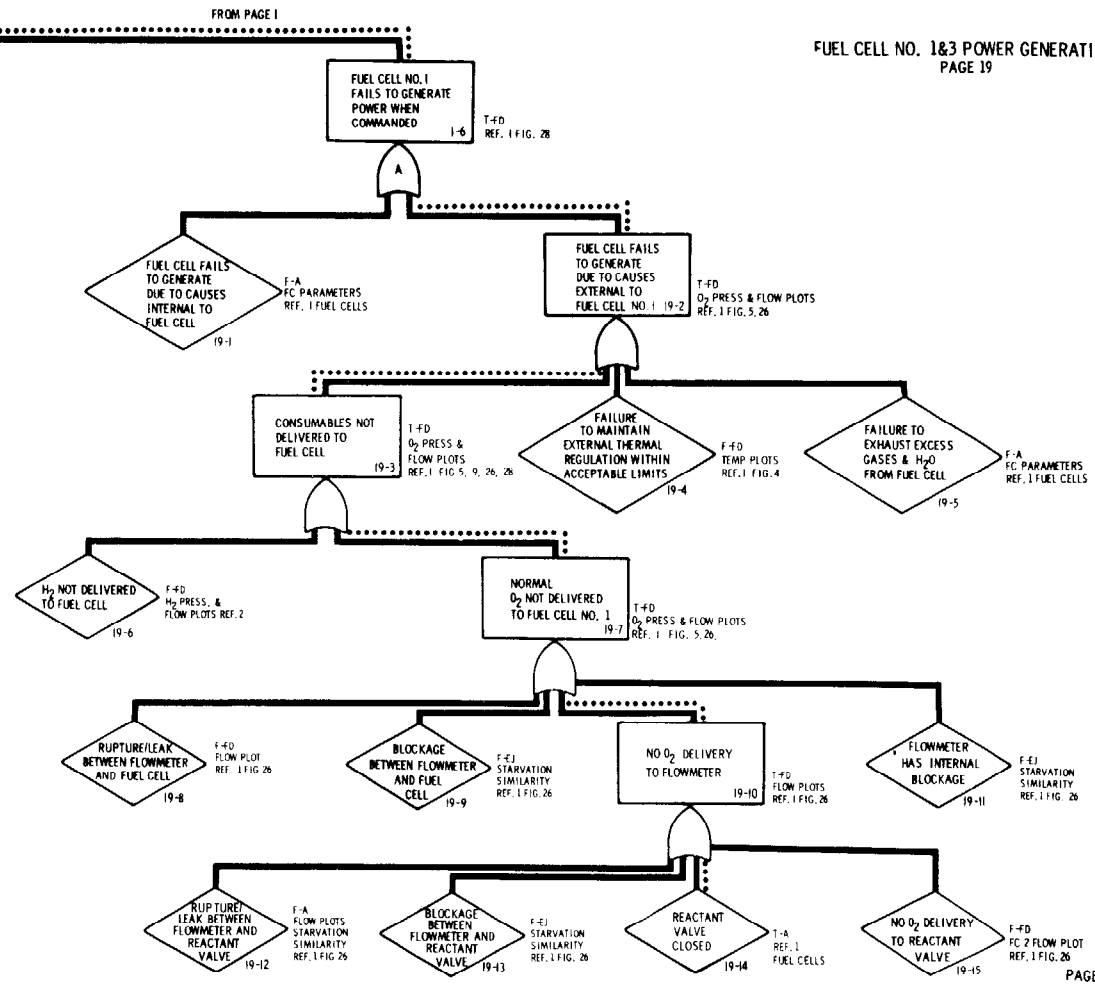
F-133

FAN CIRCUIT - TORCH EFFECT
PAGE 18

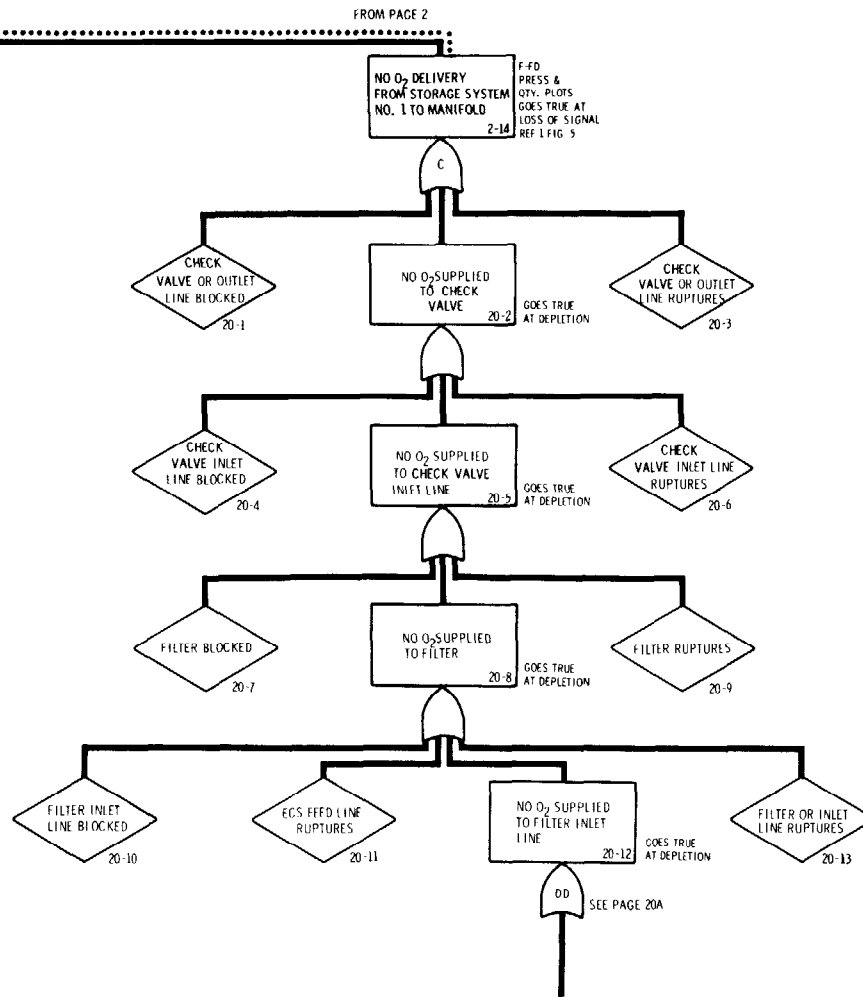


F-134

FUEL CELL NO. 1&3 POWER GENERATION
PAGE 19

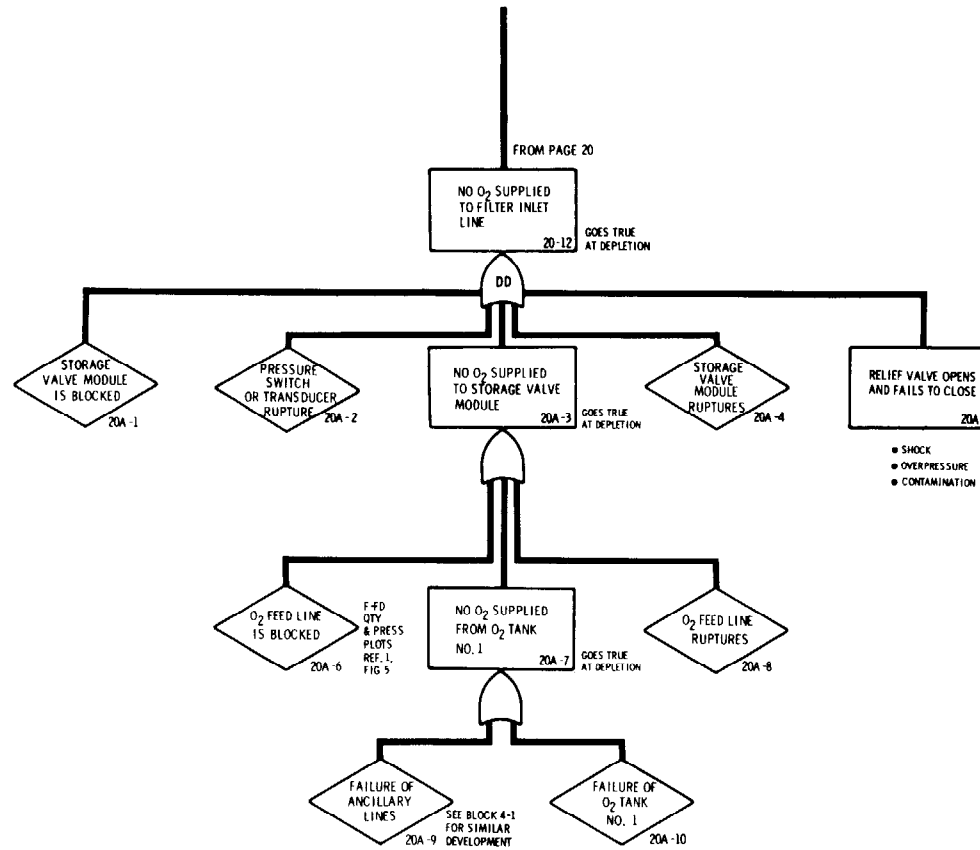


F-135

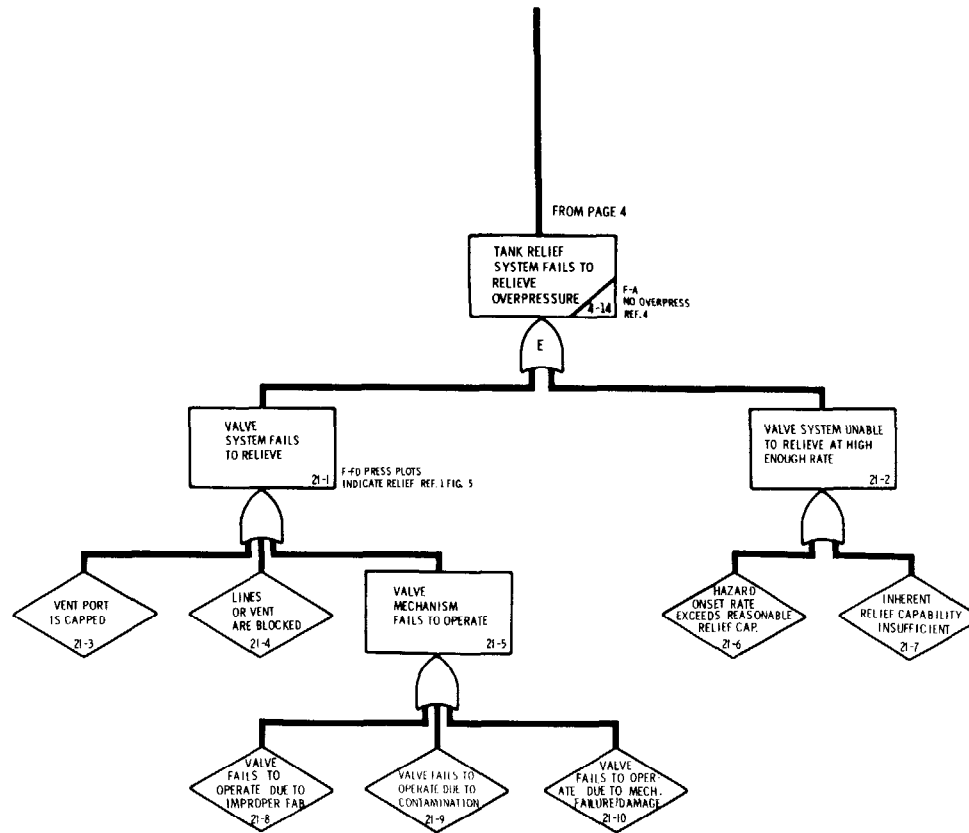


O₂ STORAGE SYSTEM NO. 1
PAGE 20

O₂ STORAGE SYSTEM No. 1
PAGE 20

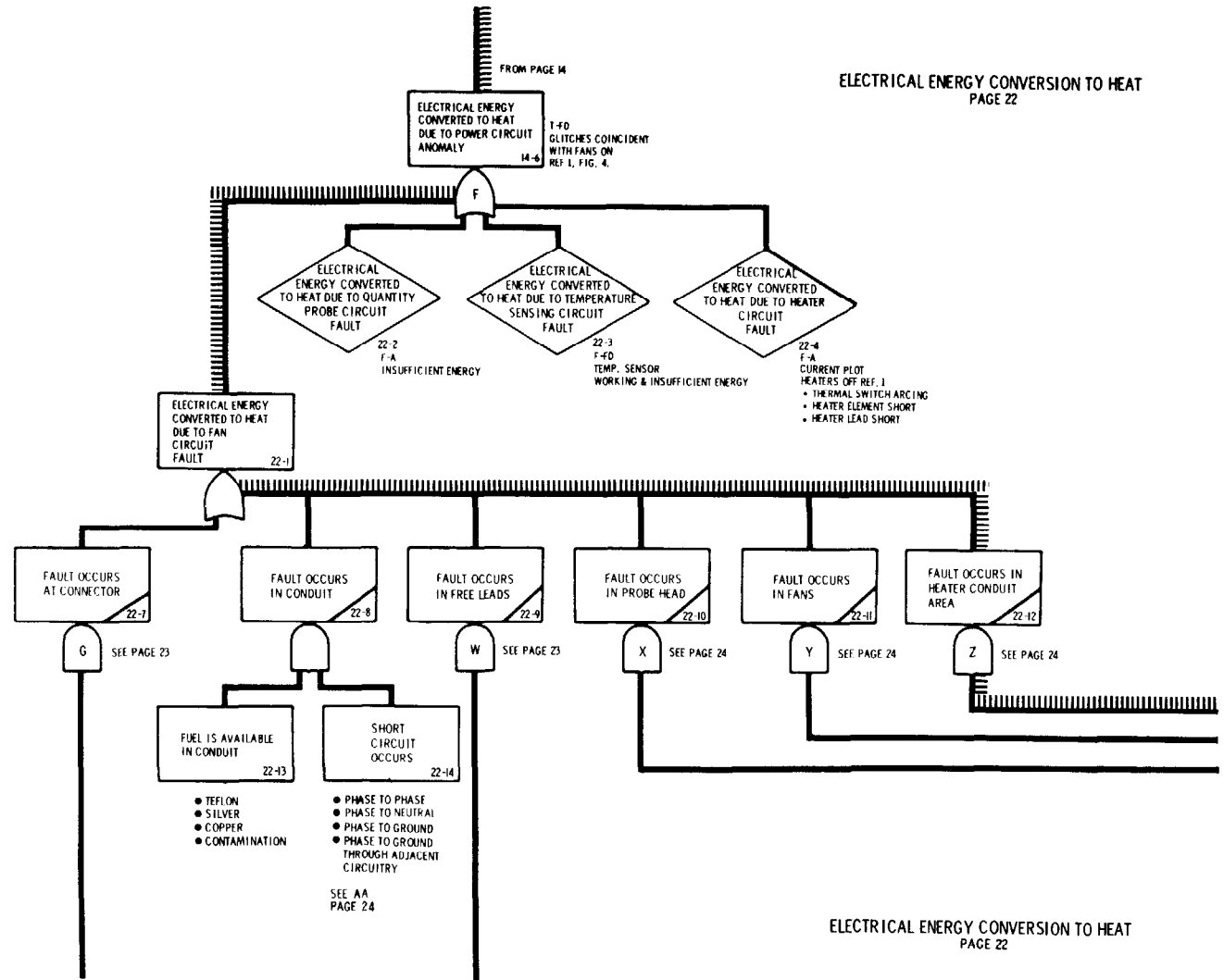


F-136

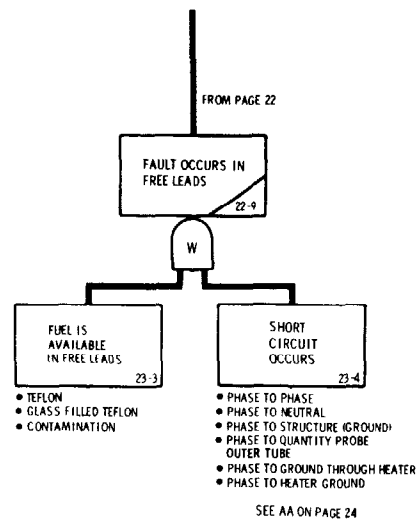
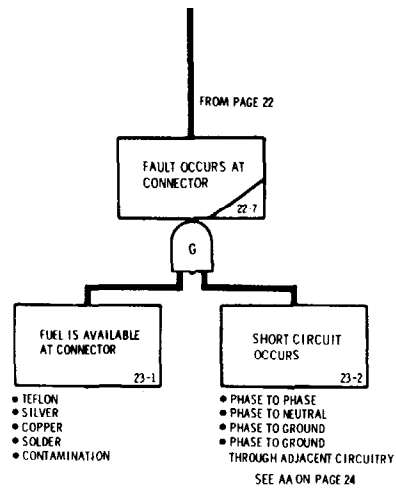


F-137

F-138

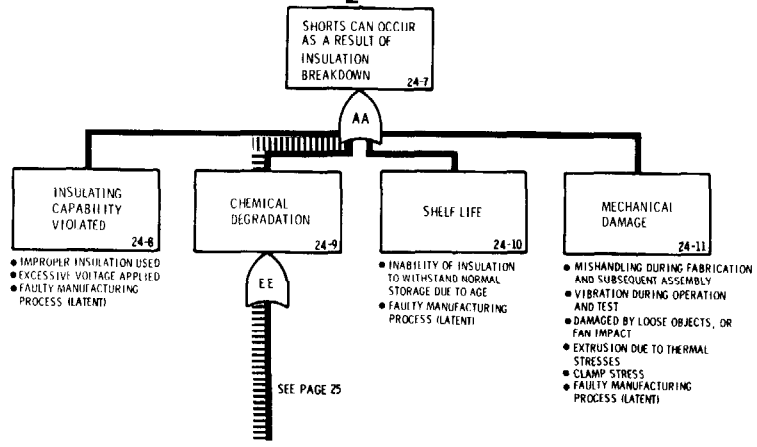
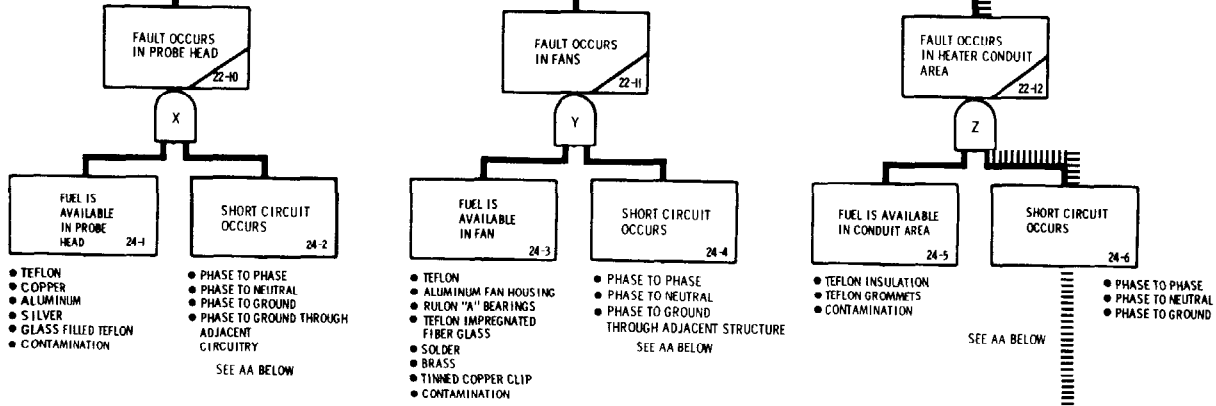


F-139



SHORT CIRCUIT REACTIONS
PAGE 23

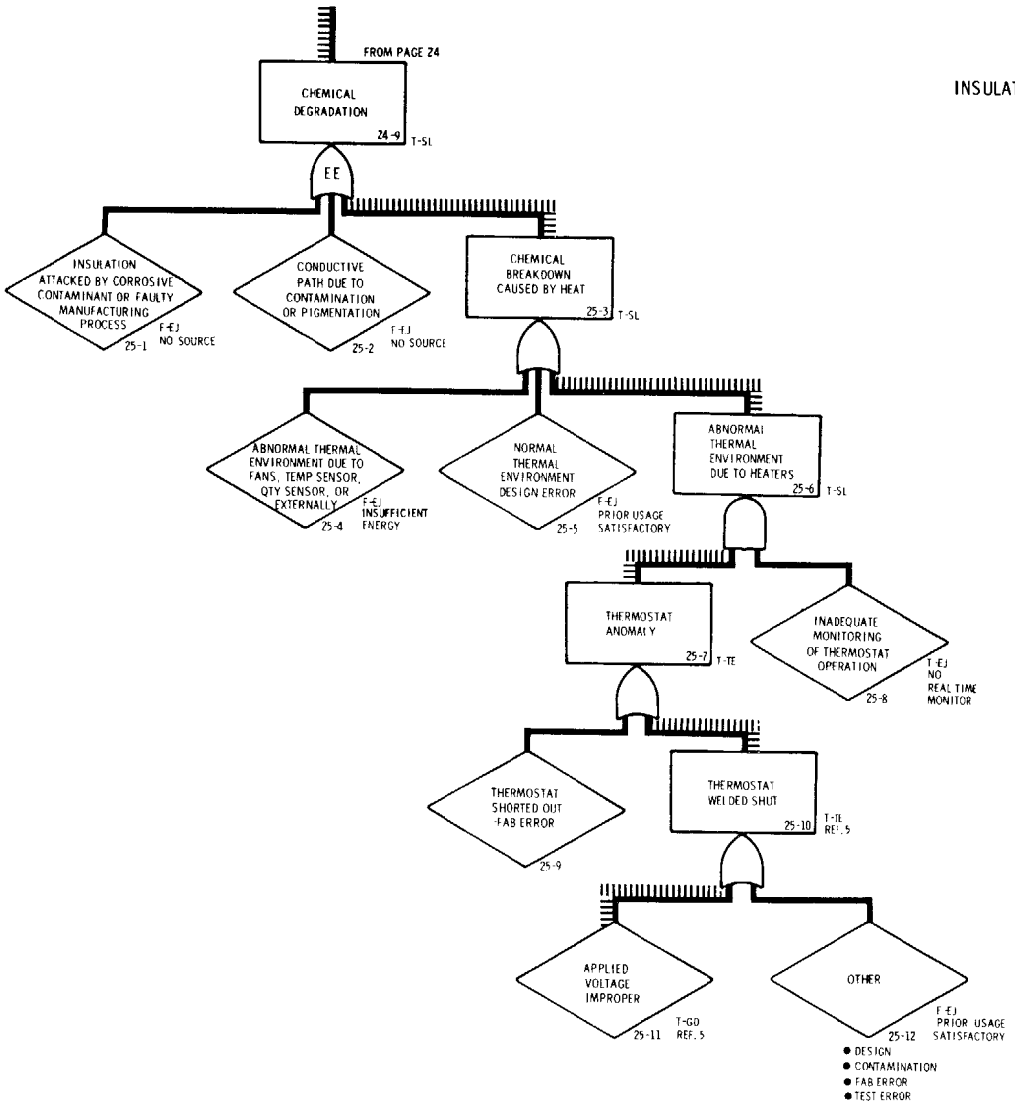
SHORT CIRCUIT REACTIONS
PAGE 23



F-140

11-11

INSULATION CHEMICAL DEGRADATION
PAGE 25



INSULATION
CHEMICAL DEGRADATION
PAGE 25